



"LEON"

General Particulars

Length Overall	36.30m
Breadth	10.00m
Draft	3.60m
Gross tonnage	365
Port of Registry	Piraeus
Built	1984 Japan
Bollard Pull	50 tonnes
Service Speed	14.3 knots

Capacities

Fuel.	47.1cu.m.
Fresh Water	22.0cu.m.
Detergent	2.0cu.m.
Foam	6.8cu.m.

Class

Lloyd's
+100 A2 Tug

Main Power Plant

2 x Niigata 6L28XE 6cyl, intercooled, turbo diesel main engines
Total Rated Power 2536kW (3400 BHP)

Propulsion

2 x Niigata z-pellers (ZP-3A) with Kort nozzles
Rotable 360 degrees

Electrical

2 x Yanmar 6KFL 110 Kia generators 225V
AC, 60 cycle, 3 phase

Deck Machinery

Hydraulic, remote controlled towing winch and anchor
Windlass on forecastle, Hydraulic towing winch aft
Portable oil dispersant spray nozzles - 350litres/min

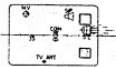
Fire Fighting

1 x remote controlled masthead monitor - 700M3/hr
2 x bow monitors - 500litres/min
Water curtain for deck and superstructure cooling - 125litres/min

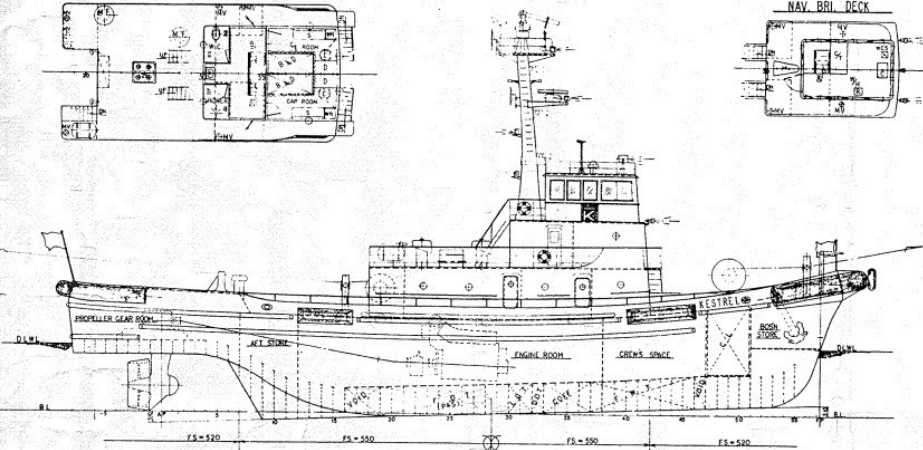
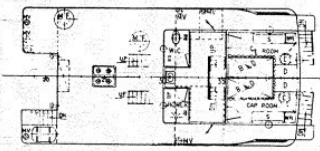
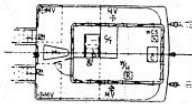
GENERAL ARRANGEMENT

BRIDGE DECK

COMPASS DECK



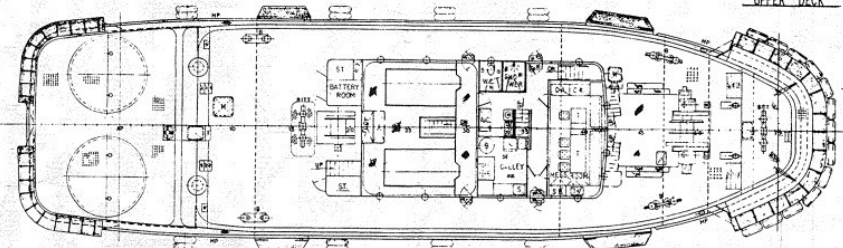
NAV. BRIDGE DECK



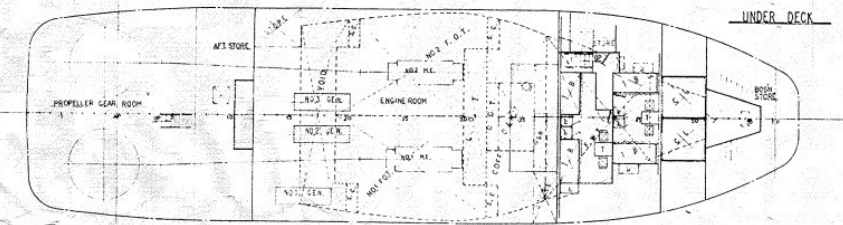
PRINCIPAL PARTICULARS

PRINCIPAL DIMENSIONS	
LENGTH (O.A.)	36M 74
LENGTH (P.P.)	30M 80
BREADTH (M.L.D.)	10M 00
DEPTH (M.L.D.)	4M 40
DRAFT (DESIGNED)	3M 18
TONNAGE	
GROSS TONNAGE	365.10M
MAIN ENGINE	
TYPE	MITSUBISHI 6L20BBE
NUMBER	2 SETS
OUTPUT (NORMAL)	1600 PK
PROPELLER	
TYPE	MITSUBISHI 2-PELLER 3A
NUMBER	2 SETS
SPEED	
TRIAL (MAX.)	13.8 KTS
DEAD PULL (MAX.)	46.0 TON
COMPLEMENT	
CAPTAIN	1 P
ENGINEER	1 P
CREW	1 P
TOTAL	3 P

UPPER DECK



UNDER DECK



1:100

360-197

3200⁰⁰ HARBOR TUG

GENERAL ARRANGEMENT

DATE DRAWN: 1985.7.9

DATE CHECKED: 1985.7.9

DATE APPROVED: 1985.7.9

SCALE: 1:100

DRAWN BY: J.G.

CHECKED BY: J.G.

APPROVED BY: J.G.