



“LYBOUSSAKIS MINOAS”

General Particulars

Length Overall	33.60m
Breadth	10.80m
Draft	4.50m
Gross tonnage	438
Port of Registry	Piraeus
Built	1996 SNG
Bollard Pull	62 tonnes
Service Speed	14.3 knots

Capacities

Fuel.	147.1cu.m.
Fresh Water	22.0cu.m.
Detergent	2.0cu.m.
Foam	6.8cu.m.

Class

INSB
+100 A1 FIFI CLASS 1, SALVAGE Tug

Main Power Plant

2 x SKL 8 VD 29-24 AL 2
Total Rated Power 3460kW (4700 BHP)

Propulsion

2 x ASD Schottel Lips CPP in Kort nozzles
Bow Thruster 3,5 tons

Electrical

2 x Caterpillar 218 kWh
Perkins harbour gen 23hp

Deck Machinery

FRW/AFT Towing Winch with fibre rope & towing wire
1 x Towing hook 65t

Fire Fighting

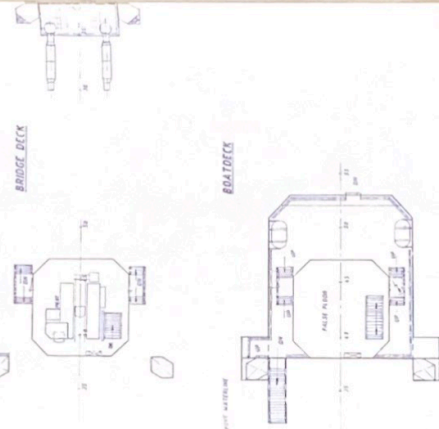
FiFi 1 2 x 1400 cbm at 130m

FLY-PLATFORM

BRIDGE DECK

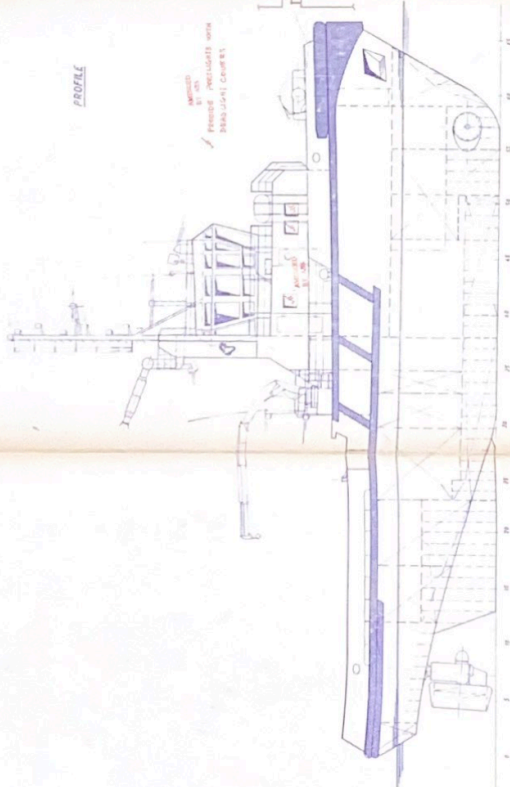
BRIDGE DECK

SEM-RAISED FORECASTLE DECK



PROFILE

UNLIMITED BY OR
 PRESSURE RESISTANCE WITH
 250 BAR/3625 PSI



SHIP'S COPY

NOT RECOMMENDED
 AFTER 31 OCT 1995
 31 OCT 1995
 31 OCT 1995

PRINCIPAL PARTICULARS FOR APPROVAL

LENGTH O.A. 338.6 m
 LENGTH M.L. 316.5 m
 BEAM M.D. 60.4 m
 DEPTH 5.9 m
 DR-F.T. 1.50 m

SPEED 12.5 kn (m/s)
 POL. LOAD PULL 55 m (m/s)
 COMPL. 11
 TANK MANAGEMENT - CATEG. 1 ONLY
 CLASS BY DNV GL

WILSMULLER ENGINEERING B.V.
 IJMUUDEN - HOLLAND

55 T. OP. RESOUR. APPROVAL FOR GIPS

PRIM. V. N. O. RES. - C. A. R. M. I. N. I. S. T. A. N. T.

SCALE 1:100	DATE 15.03.1992	DESIGNER	NO. 1000
DATE 15.03.1992	DESIGNER	NO. 1000	NO. 1000

